



EQUIPE

Somos um escritório de arquitetura em São Paulo. Desenvolvemos desenhos em diferentes escalas, desde projetos de arquitetura de interiores, decoração até a escala urbana.

Buscamos clareza nos desenhos e atemporalidade no traço, trabalhando os espaços integrados de forma que tudo se complemente.



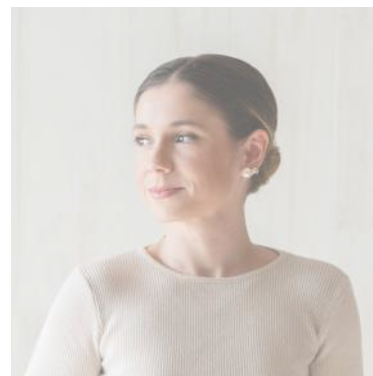


LUCAS TAKAOKA
arq.

Graduated in 2015 in architecture and urbanism at Mackenzie Presbyterian University, he has always focused on the goal of opening his office. At the end of 2016, he began working on projects in the northeastern region of Brazil via home office, which opened doors for clients from other states to seek him out for new work.

In 2018, he immersed himself in the design market, designing furniture design pieces, which often arise according to a special need in architectural projects. Today it has contracts with two factories that supply its products and sell them in the main Brazilian capitals, such as São Paulo, Rio de Janeiro, Salvador, Porto Alegre, among other states.

This polygamy is essential for working on the varied scales that arise in a professional's routine.

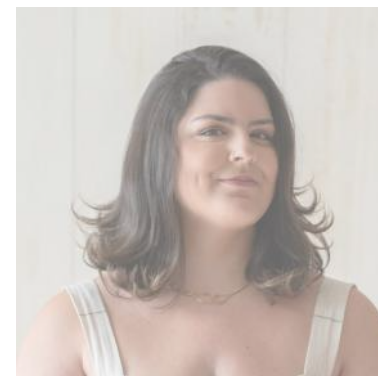


BEATRIZ BOSSCHART
architect - coord

Architect and urban planner from Pernambuco, graduated from the Catholic University of Pernambuco, with experience in renowned offices and experience in high-standard architectural projects and large-scale works.

Passionate about her profession, she has a critical and observant eye for details and believes that every project is capable of telling a story and impacting people positively.

Beatriz has been a member of Lucas Takaoka's office since 2023, coordinating the team and projects and now has become an office's associate.



BRUNA SIMÕES
arq.

Architect and urbanist graduated in 2020 at Presbyterian University Mackenzie, sought knowledge in various areas such as industrial architecture, commercial, interior design and lighting.

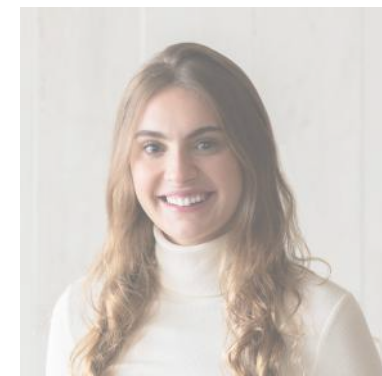
He has a great passion for the profession and is currently part of the Lucas Takaoka team, working in the project development sector.



RAQUEL GOUVEIA
arq.

Architect and urbanist graduated at São Paulo Fine Arts Academy.

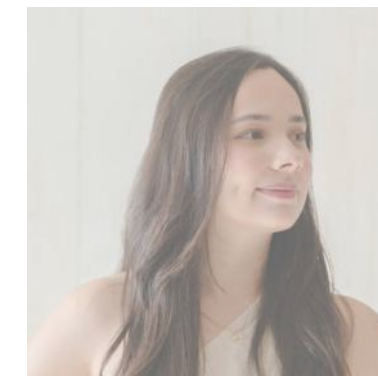
Was included in LT team in 2022 to help develop our 3D models, images and technical drawings.



GABRIELA SALVADOR
arq.

Gabriela currently works as an architect in the architecture and interiors team.

Designs and adapts technical drawings as well as monitors ongoing projects. Her graduation base was the University of Architecture and Urbanism of the Pontifical Catholic University of Campinas, as well as other experiences on other offices based in the city of Campinas.



CAROLINA PETITO
arq. decor

Architect and urban planner graduated from Universidade Presbiteriana Mackenzie. Throughout his career, he has accumulated experience in renowned architectural firms, standing out in high-end residential and corporate projects.

With a passion for architecture, he believes that each project transforms ideas into authentic and meaningful spaces.

Since 2024, she has joined Lucas Takaoka's team, working as a decoration architect.

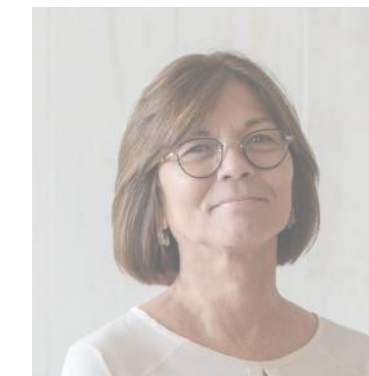


JULIA GRÁVIO
arq. 3D viz

Graduated in Architecture and Urbanism from Universidade Presbiteriana Mackenzie in 2023, she has always had a sensitive eye for architecture and design.

Julia sought to expand his knowledge through studies and professional practice. He participated in several courses to improve his skills, standing out especially in 3D modeling.

For her, architecture and urbanism go beyond a profession, it is art and a form of expression that involves her life and her work.



TERESA TAKAOKA
admin. & financial

Teresa is a key piece of our internal administration and financial management. Has been in out team since 2018.

DESIGN

"... furniture is an extension of architecture. They are linked by both having form and function. The secret of both is in the smallest details, even though they are independent scales."

We started drawing design pieces in 2018 with small project demands. Today we have factories that participate in the development of our brand, selling both to the main Brazilian capitals, but also internationally as gallery pieces of Brazilian design.



Parceiros:



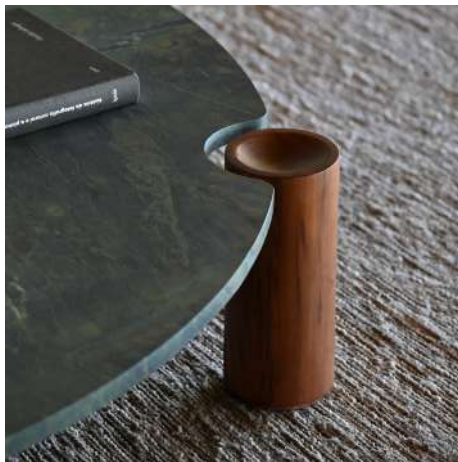
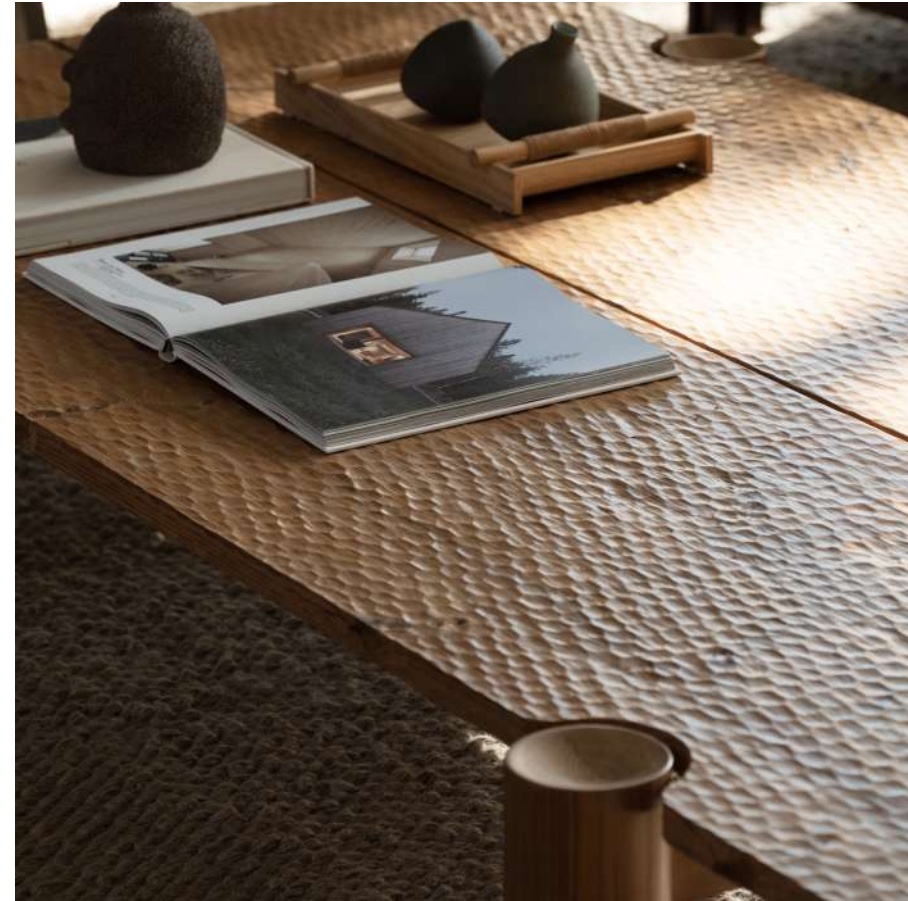
ESPASSO



wayDESIGN







RESIDENCE INTERIORS

TJ. Residence

700m²

One of the office's most striking projects. Complete renovation of a residence located on the top of a mountain, right in front of a lake and still surrounded by abundant Brazilian flora.

Pure contrast and complementation between architecture and landscaping. The green distributed throughout the landscape emphasizes the volume. Cozy spaces are created where the predominance of wood is one of the aspects of the carpentry design.

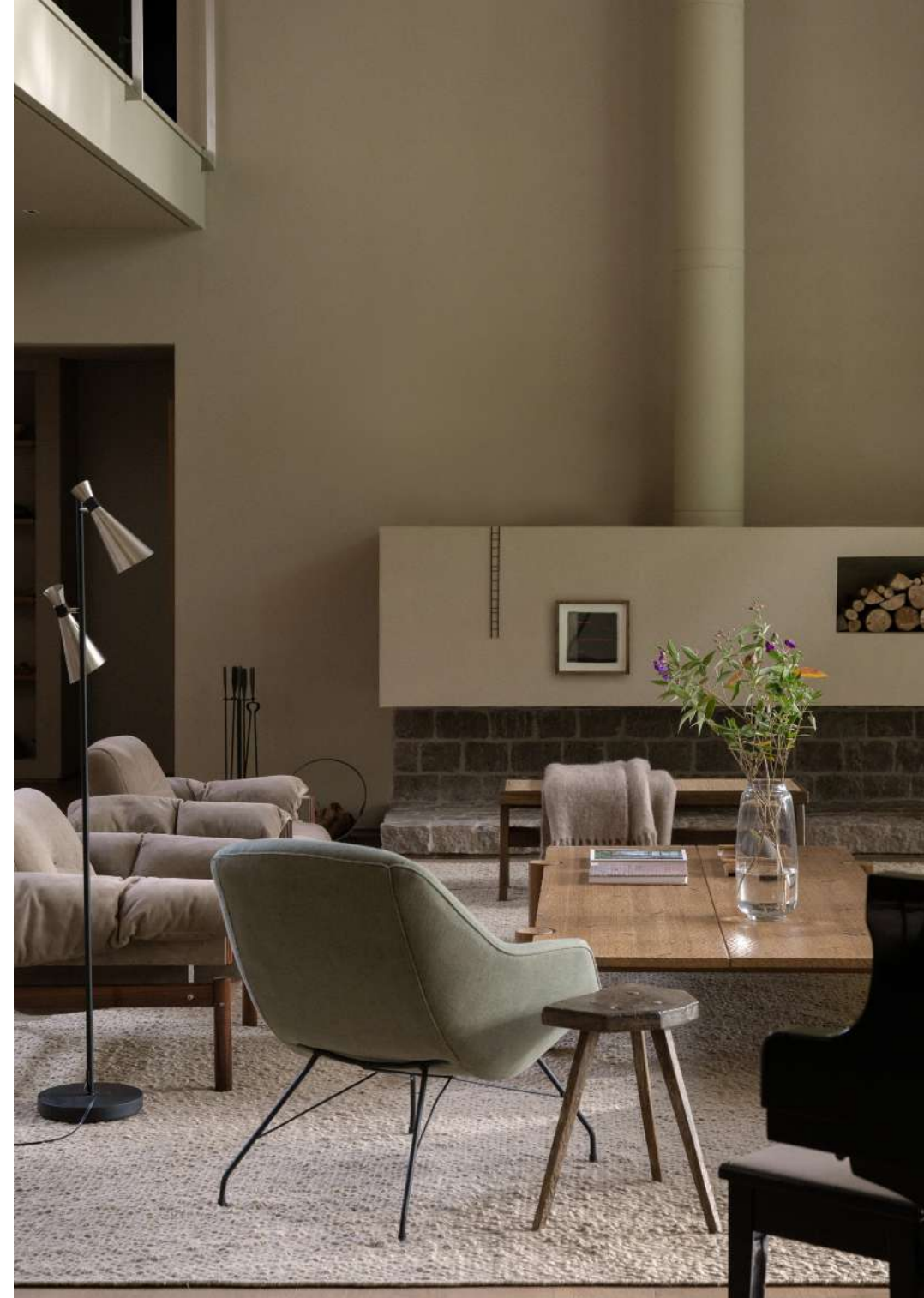
BARUERI - SP

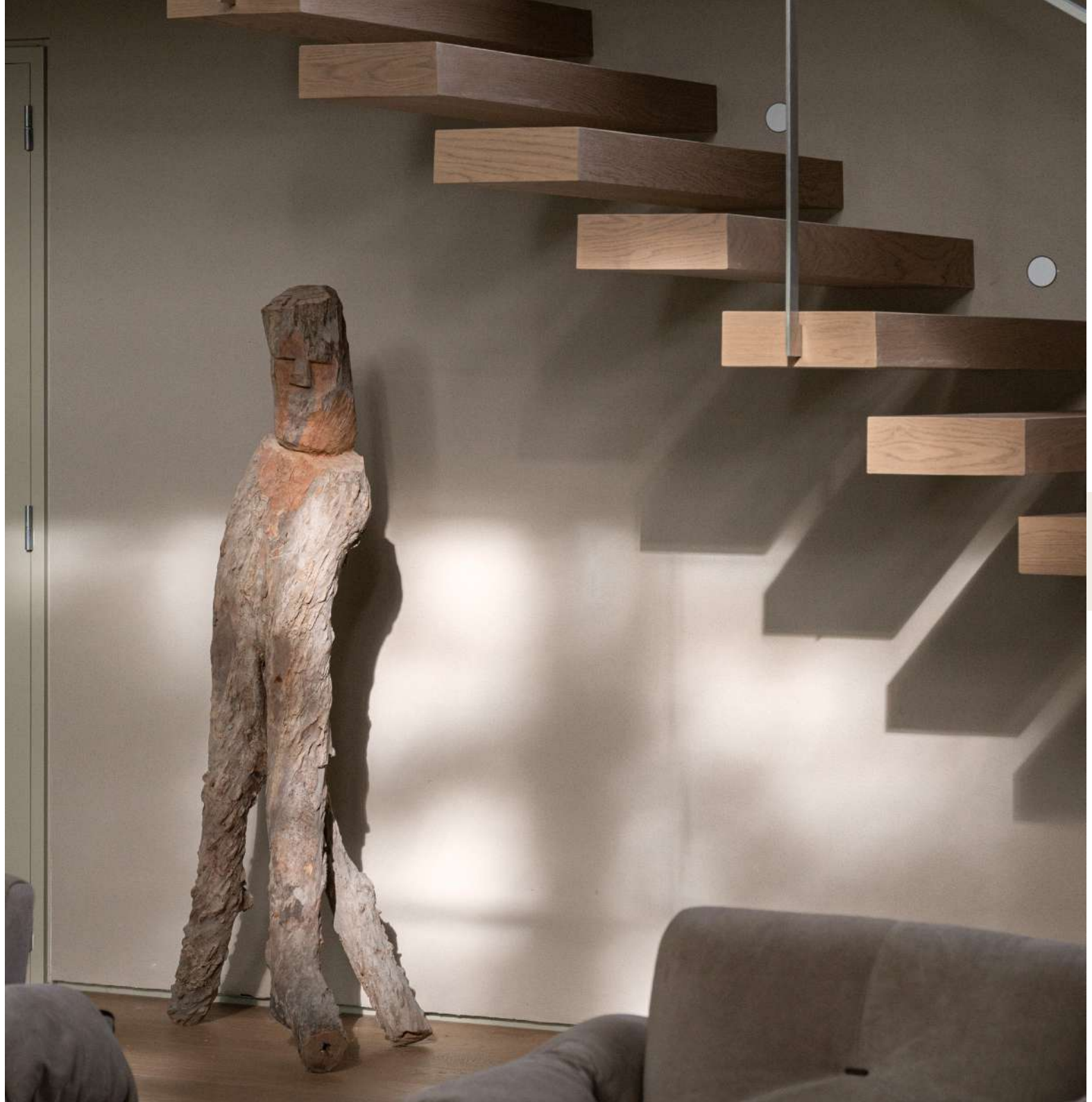




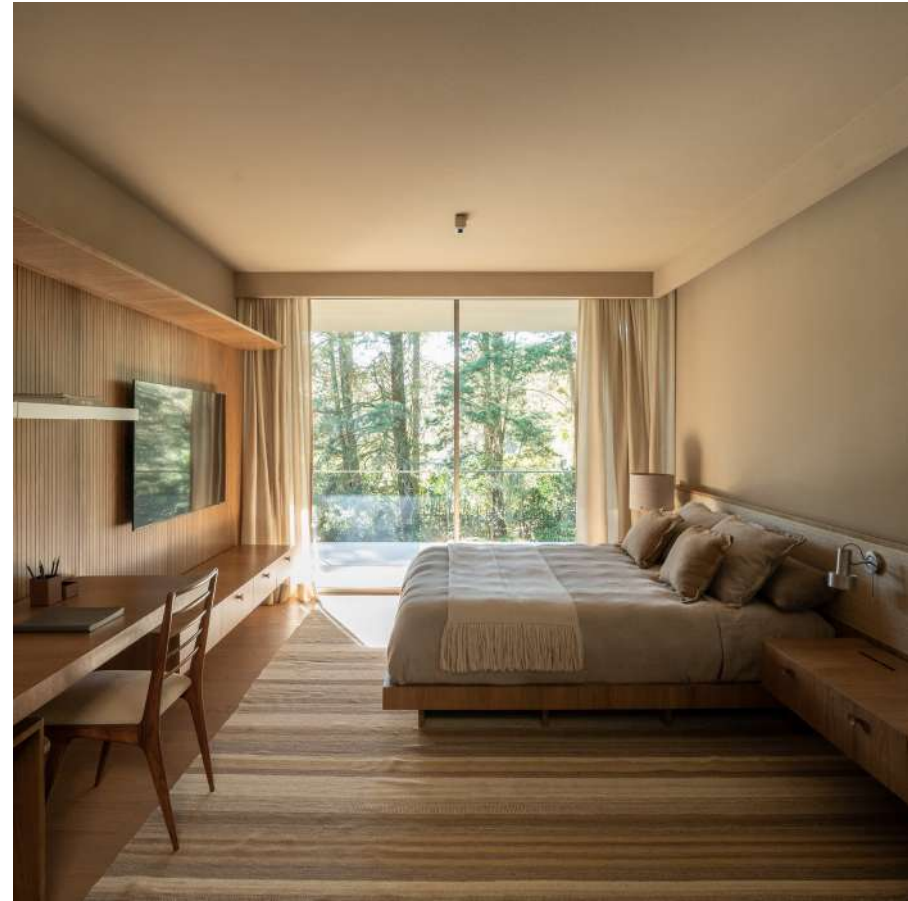




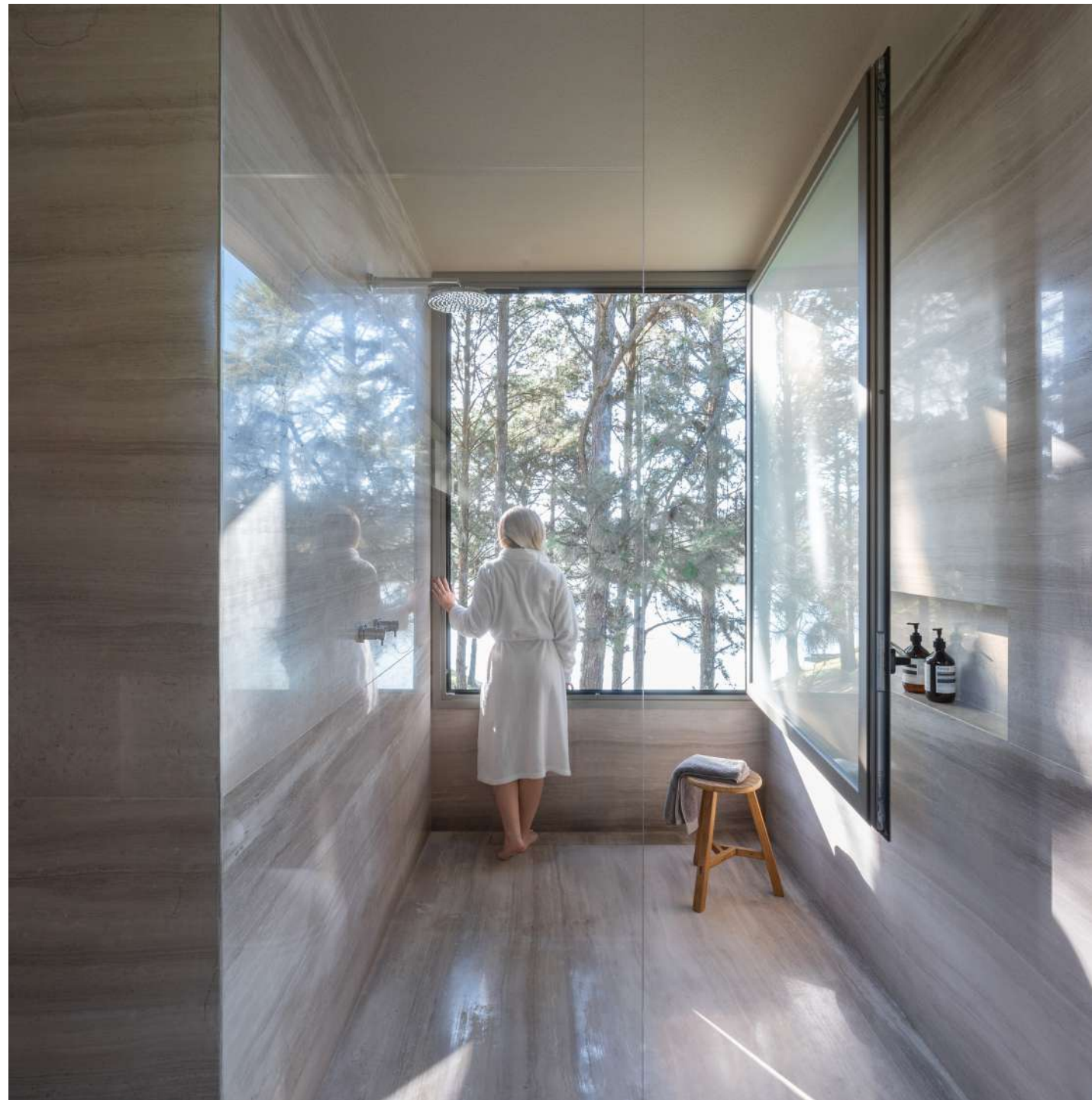


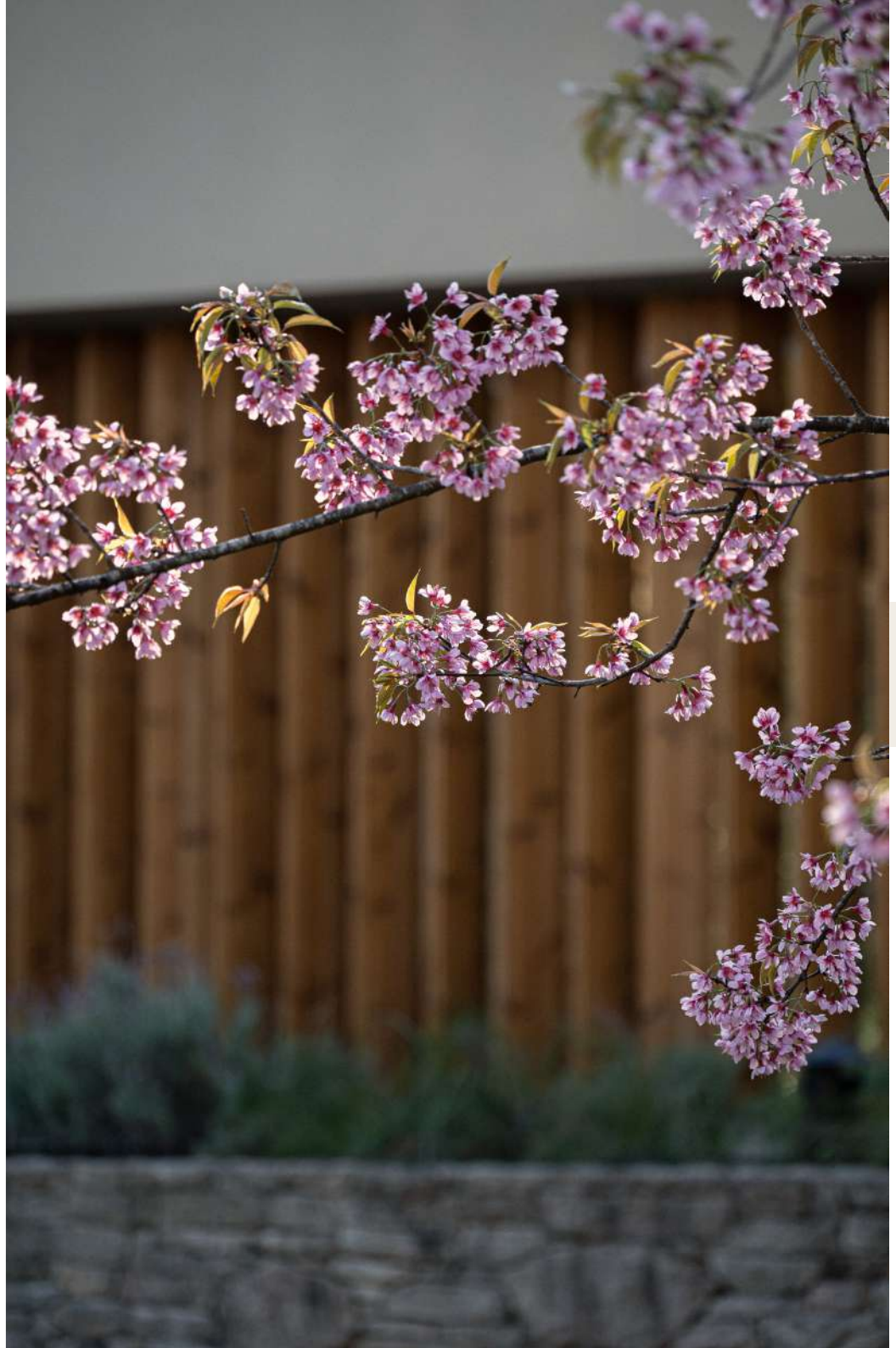












EMBAÚBA HOUSE

220m²

Embaúba House is a project that represents our greatest pursuit in the last two years. Humans have ended up prioritizing their time to the maximum in a quality of life combined with the rhythm of work. In this way, the home office on many occasions has come across the countryside, coastal, and forest landscapes, where each individual has adapted to a practically introspective period, not selfish, but taking care of themselves.

The urban exodus in search of forests, the smell of rain, breaks in daily life, in places detached from the gray urban walls. This has been a panorama of teachings and maturing. Today we are practically back to the "normal" rhythm. Automotive traffic flooding urban centers, trips, and public transportation at an accelerated pace. But today we stop and, even in small doses, we have learned to value our most precious asset, time.

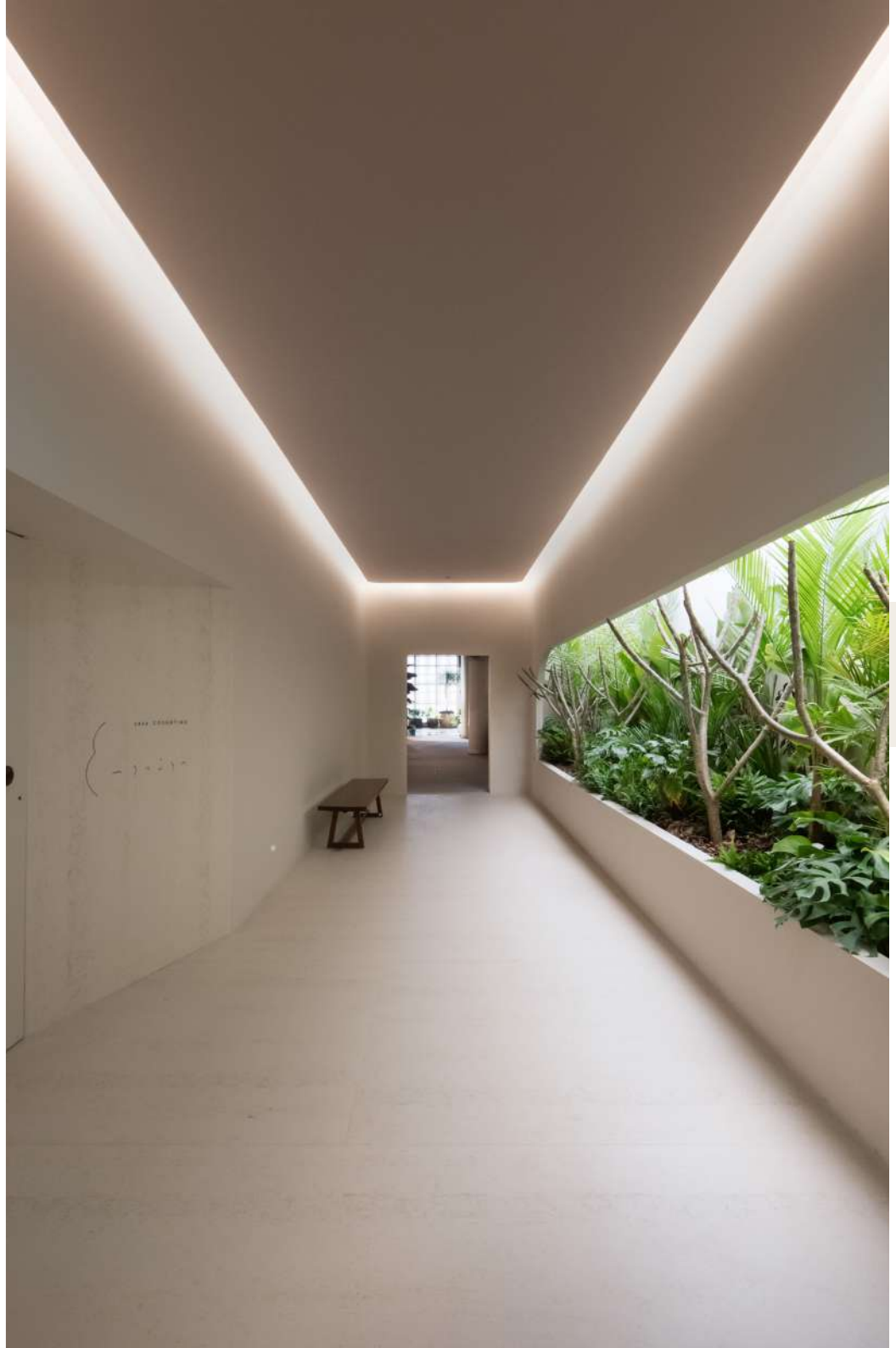
The details of our lives have been meticulously altered as our bodies analyze our deficiencies.

The lack of breaks, intervals, and more breaths of fresh and clean air. This house represents a bit of the redefinition of our own lives, establishing our priorities, our health, and our search for environments surrounded and embraced by vegetation. A daily maintenance of the soul.

"Embaúba" derives from a native Brazilian tree. Besides having medicinal properties, it is common in regions that have suffered deforestation or are in recovery. Its accelerated growth helps the entire biome. Just as this tree balances the forest and turns a degraded area into life, we people have learned to take better care of ourselves, rebuilding the deficient and fragile points in recent times, mainly to better preserve our future.

SÃO PAULO - SP







MS. Residence

700m²

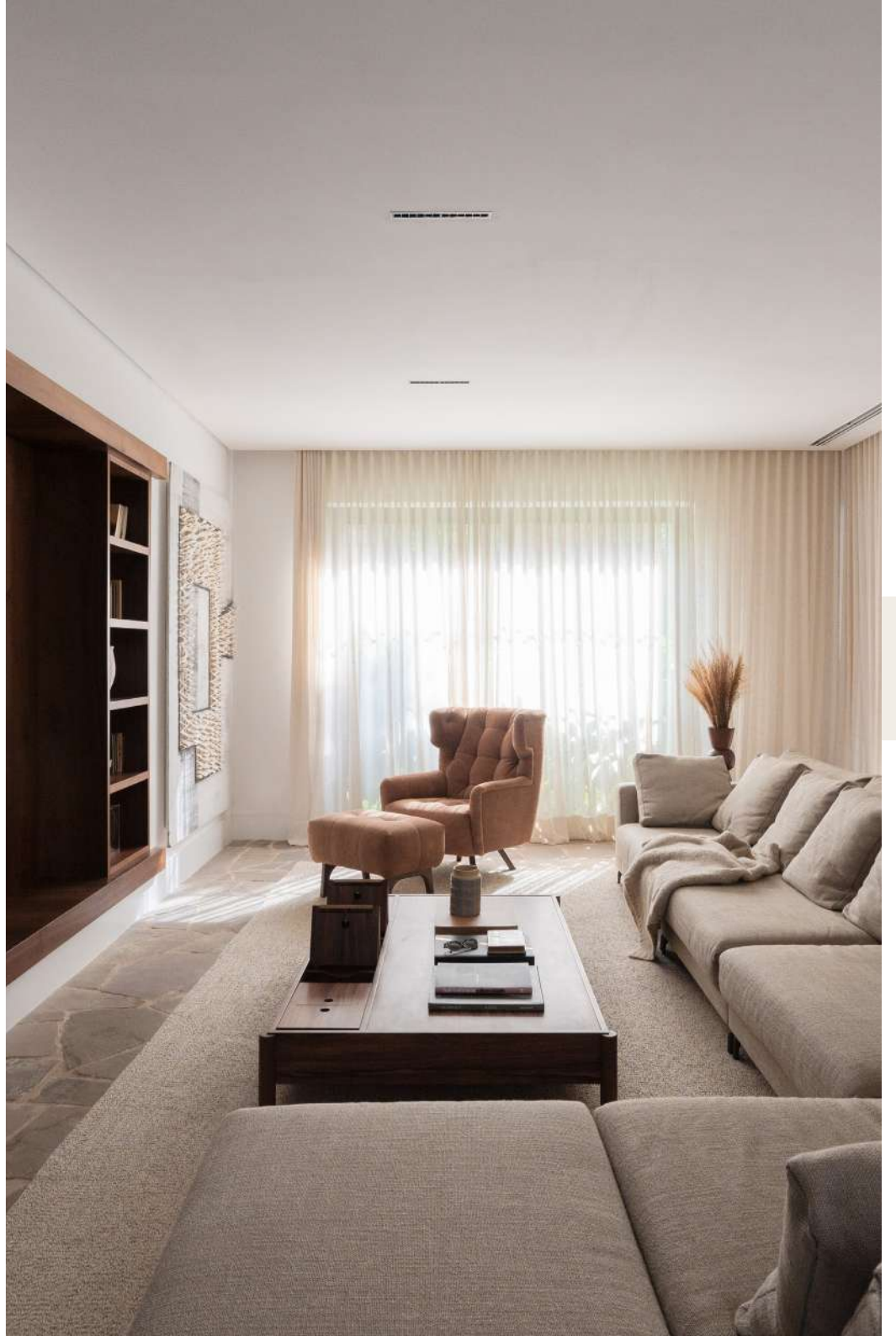
A refuge in the interior of São Paulo, this residence has a wealth of materiality and textures. Stones and bricks fit between wooden structures, creating an air of coziness.

With a plan design with more segregated environments, the interior advantage would be to create spaces that are inviting in themselves.

PORTO FELIZ - SP







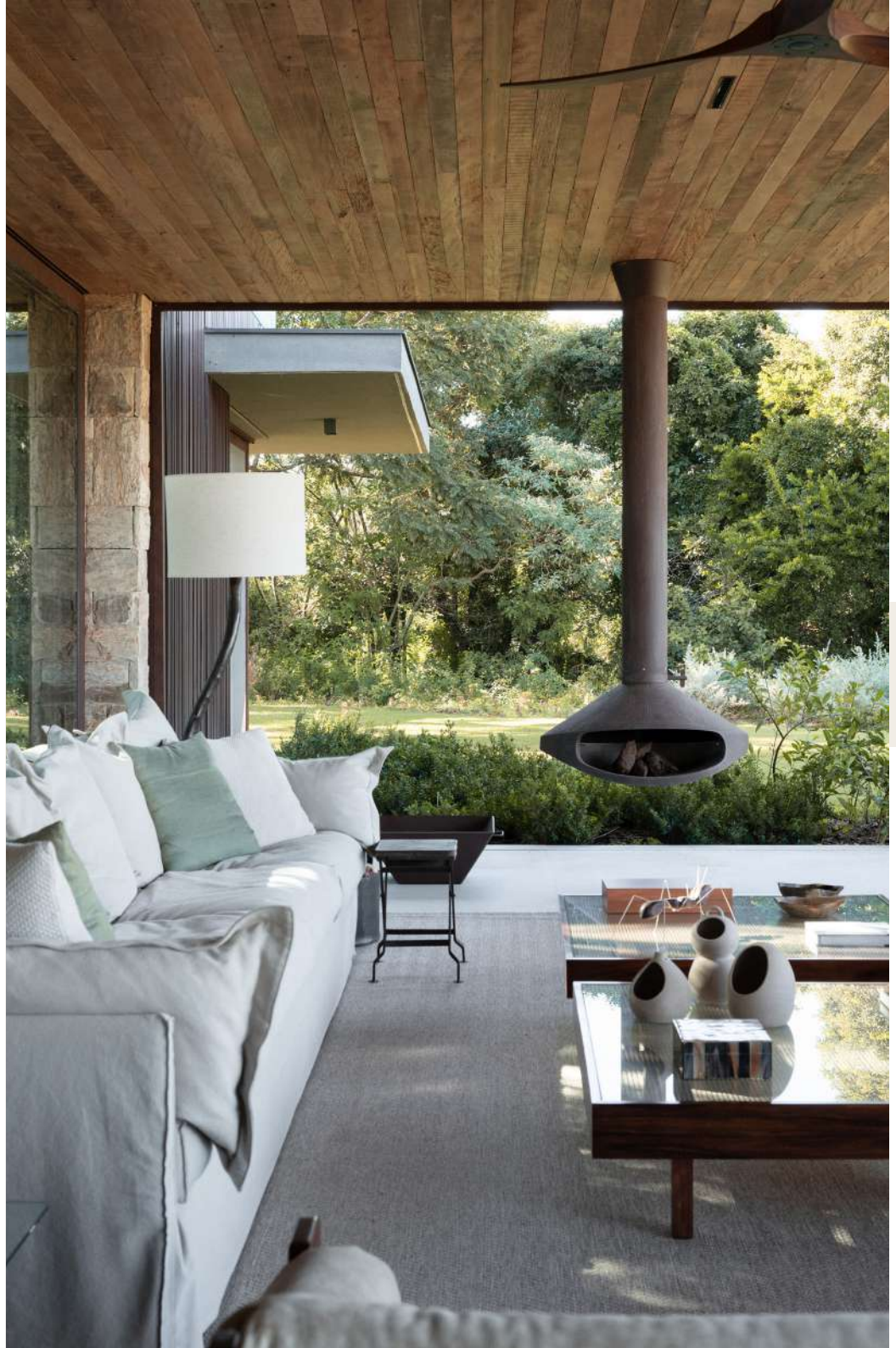
GP. Residence

1650m²

A large residence facing the view of the interior of São Paulo, an infinite horizon of farms. The layout was created to create cozy environments suitable for every moment of use, whether a small meeting between friends or a large event. The predominant use of wood stands out, contrasting directly with the stone floor.

PORTO FELIZ - SP











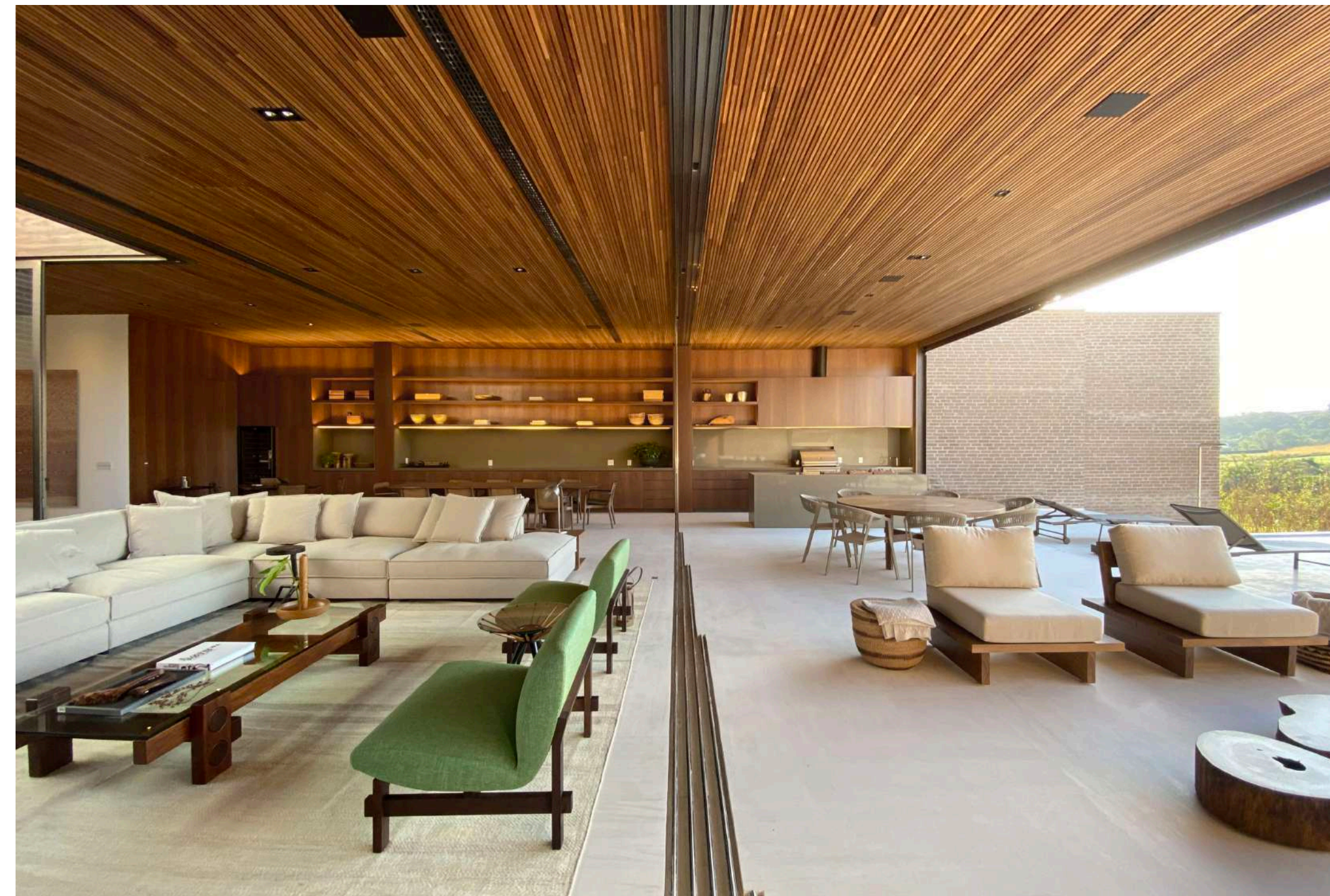
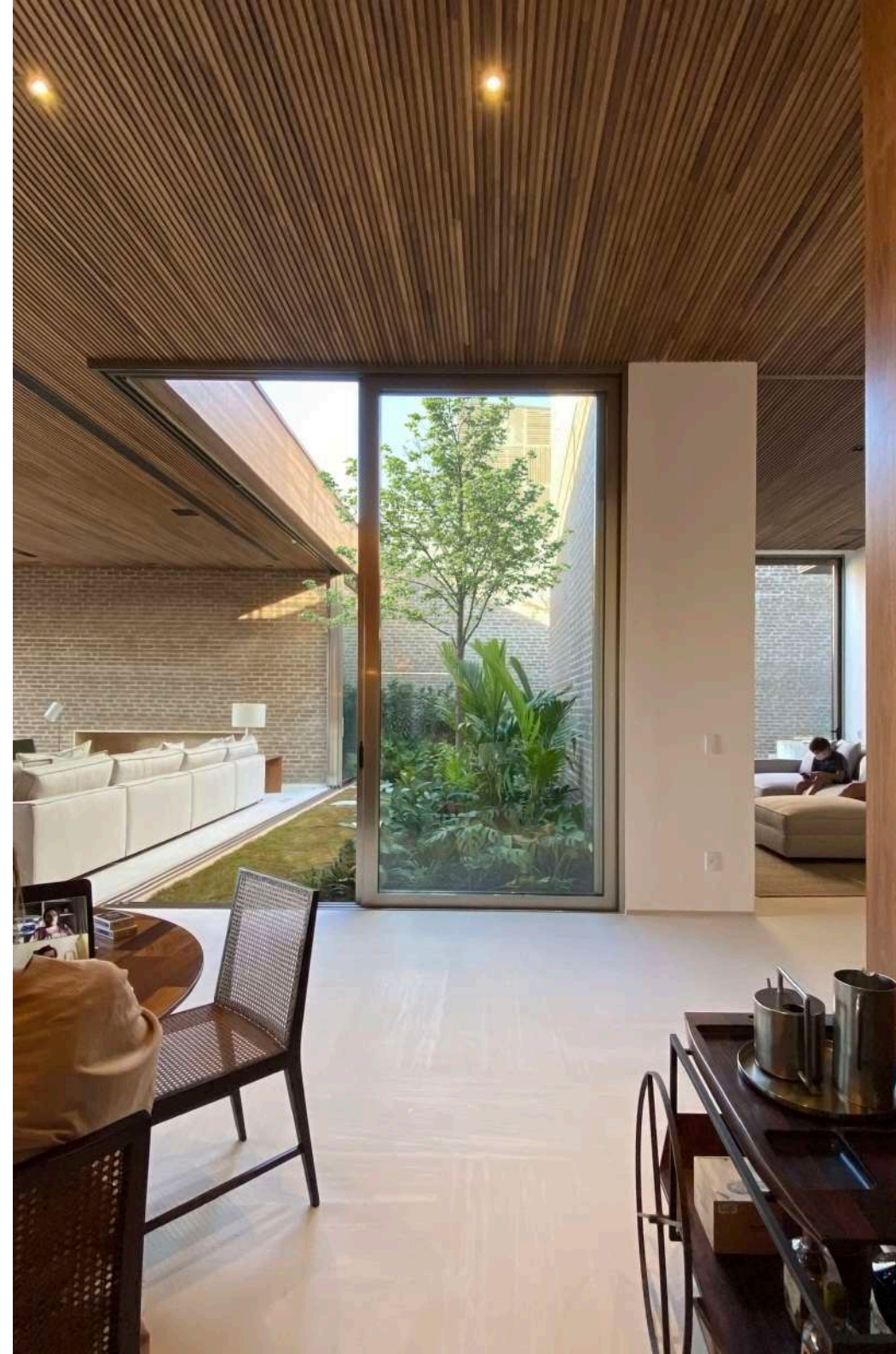
DD. Residence

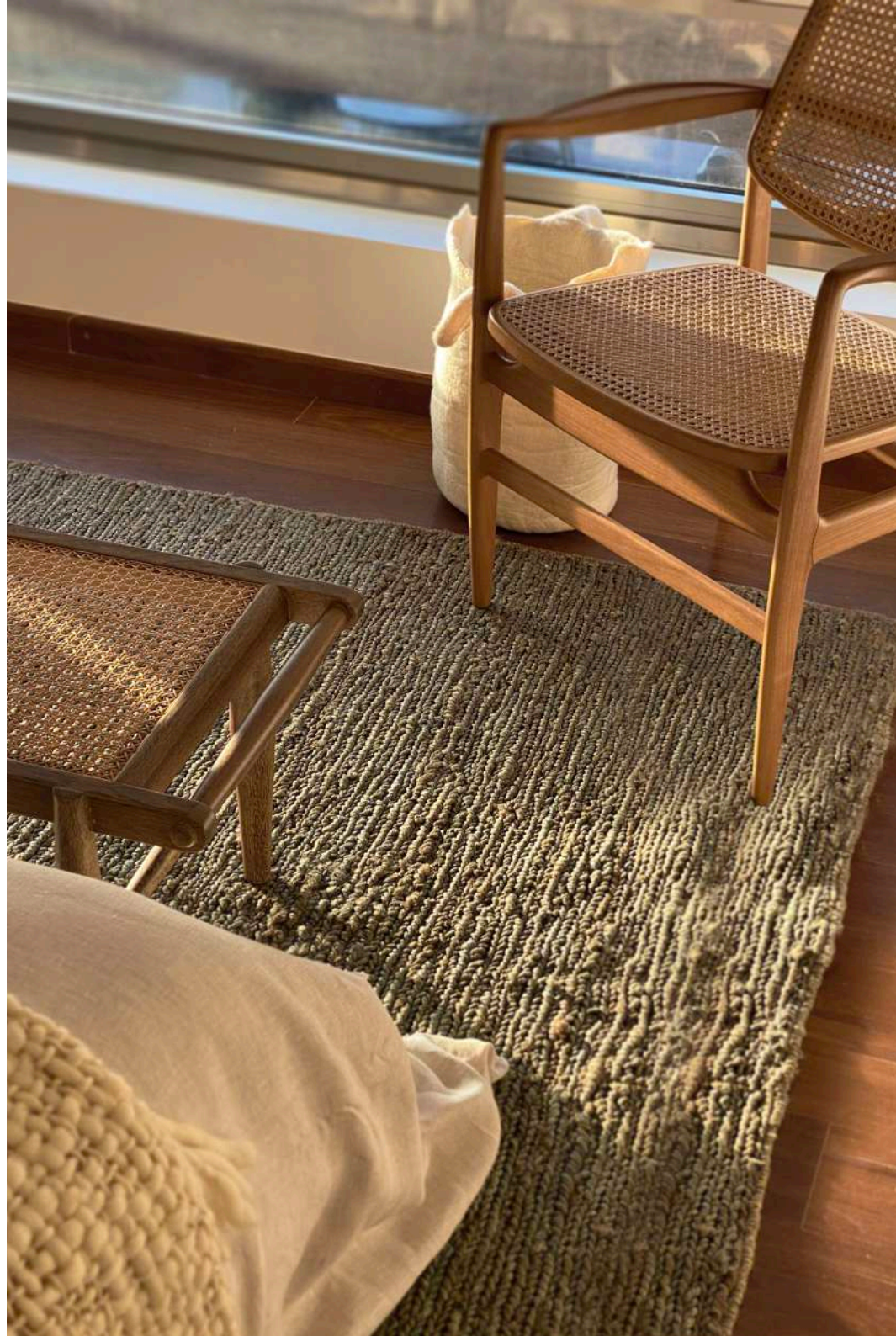
650m²

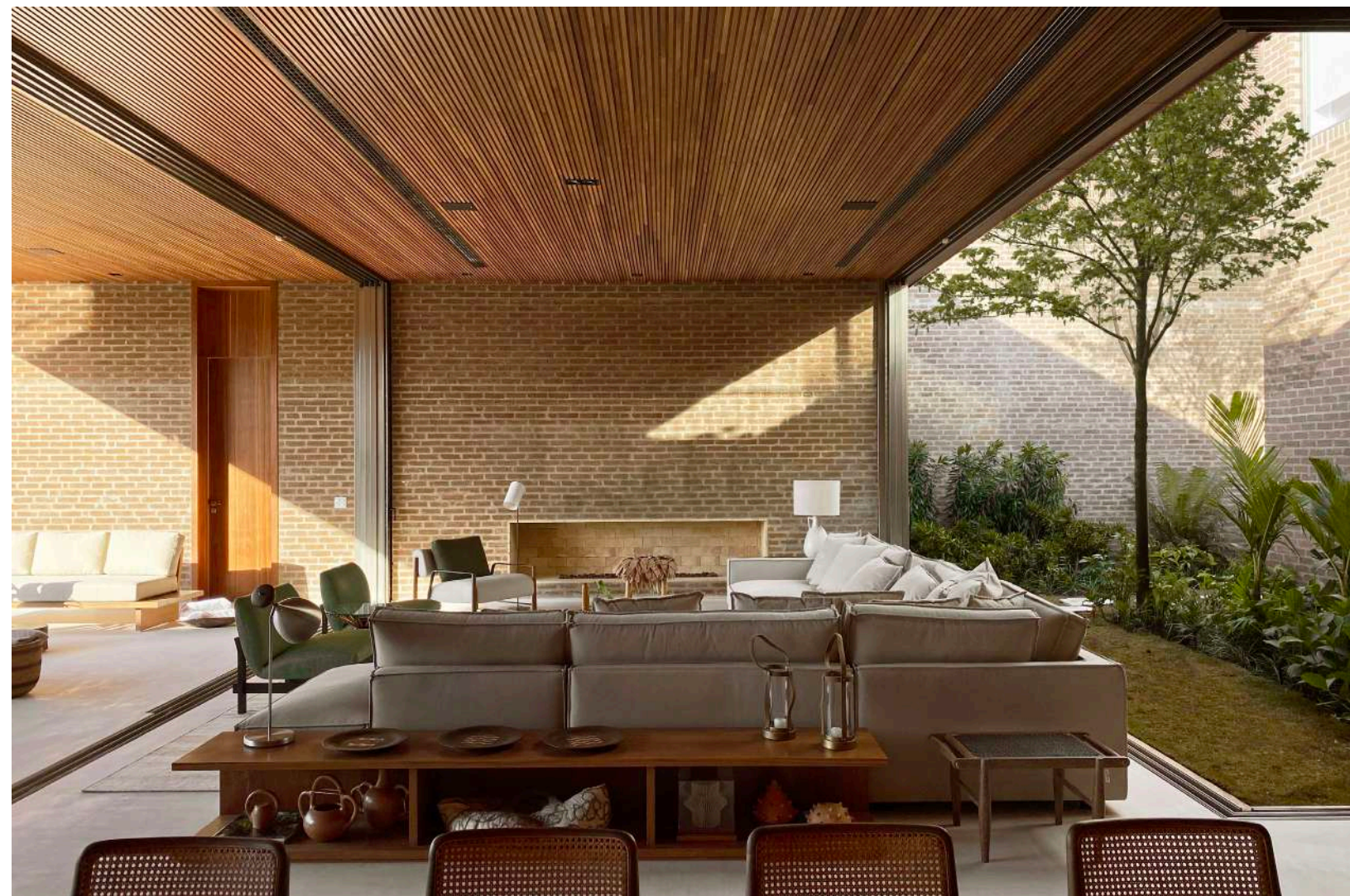
With a palette completely focused on rural neutrality, the residence focuses on welcoming a family on weekends. Environments completely integrated with each other to promote socializing, a conversation, an event or even a gastronomic moment.

The internal garden of this residence provides a breather for some internal environments, bringing green tones to the floor-ceiling window frames.

PORTO FELIZ - SP







ARCHITECTURE

BARONEZA. Residence

750m²

With a panoramic view of an orange grove, this residence's architecture is based on two blocks, living room and bedrooms, which are connected by a single circulation axis.

The contrast between the raw tone mass and the wooden structure, linked with large glass enclosures, provide greater integration with the garden and pool.

QUINTA DA BARONEZA - SP





FM. Residence

750m²

In a mixed structure between wood and concrete, the program takes place according to the unevenness of the terrain. The main aim would be to design contemporary architecture with a farmhouse character.

Its volumes appear as the residency program takes place. There is a natural path that leads from the access on the upper level to the entrance to the suites.

BRAGANÇA PAULISTA - SP







APARTMENTS

BM. Apartment

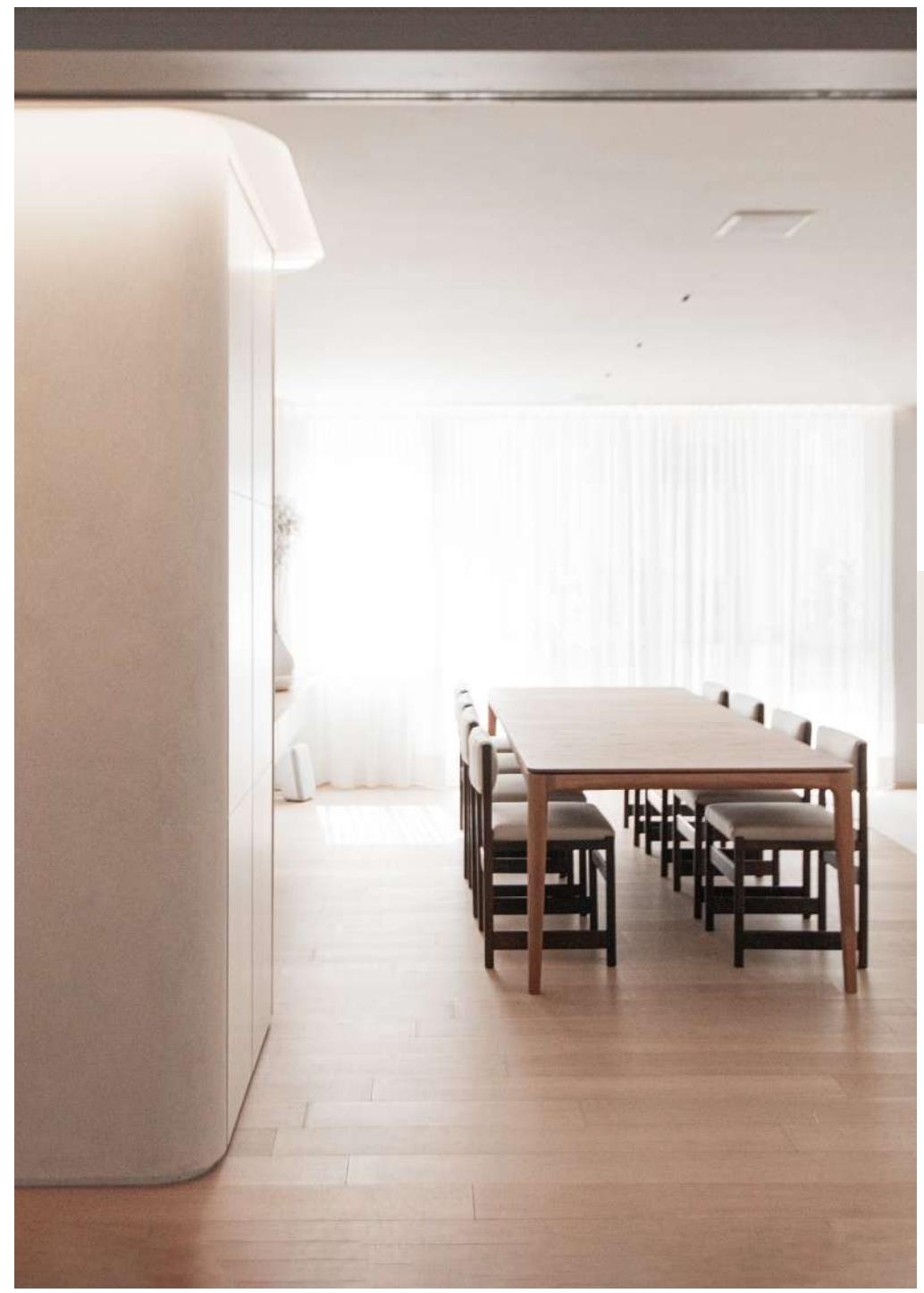
180m²

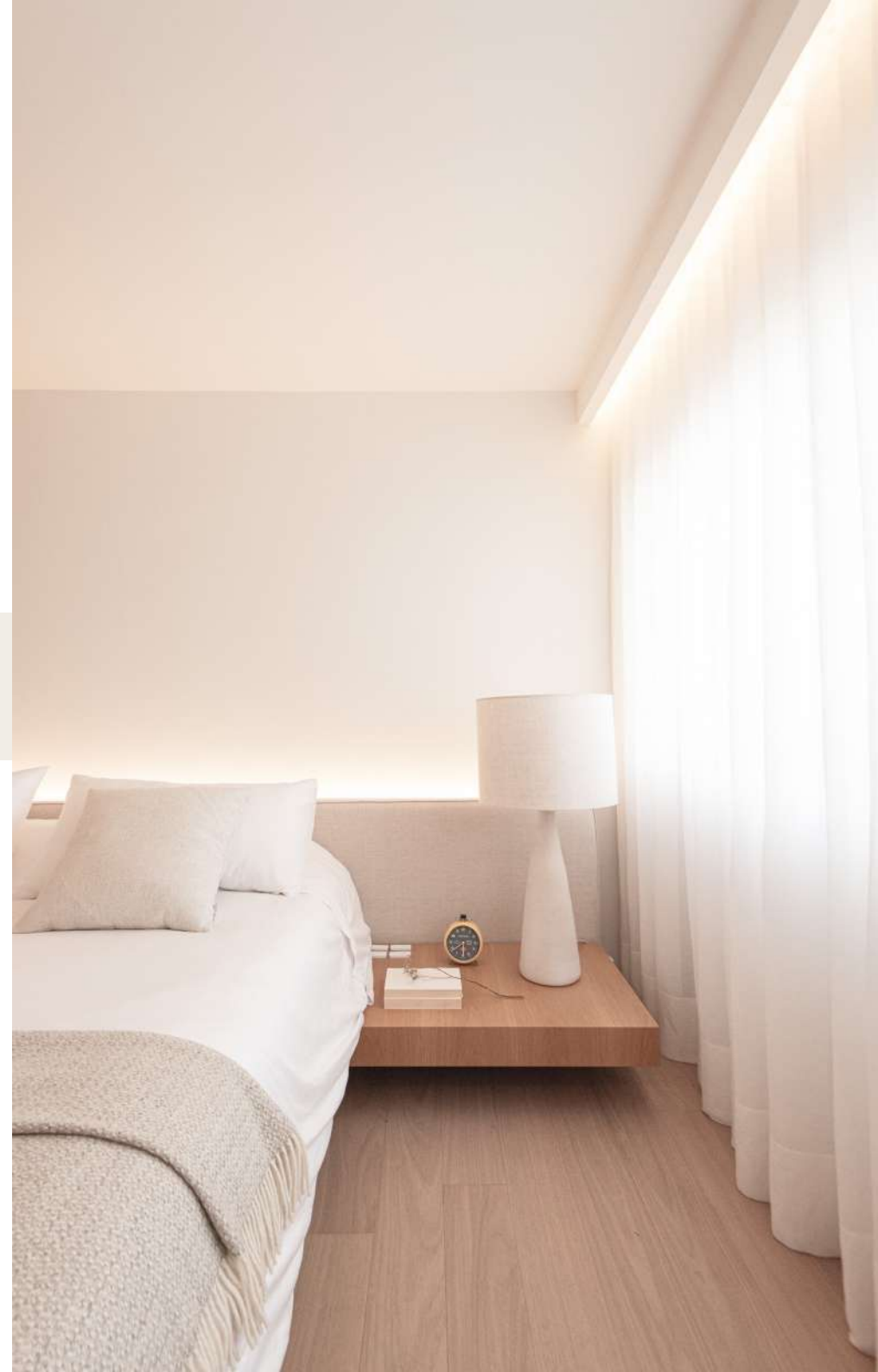
In light tones to highlight the furniture choices, this apartment values the integration between the living, dining and kitchen areas.

Using tropical plants in vases and flower boxes creates a livelier environment.

SÃO PAULO - SP







GE. Apartment

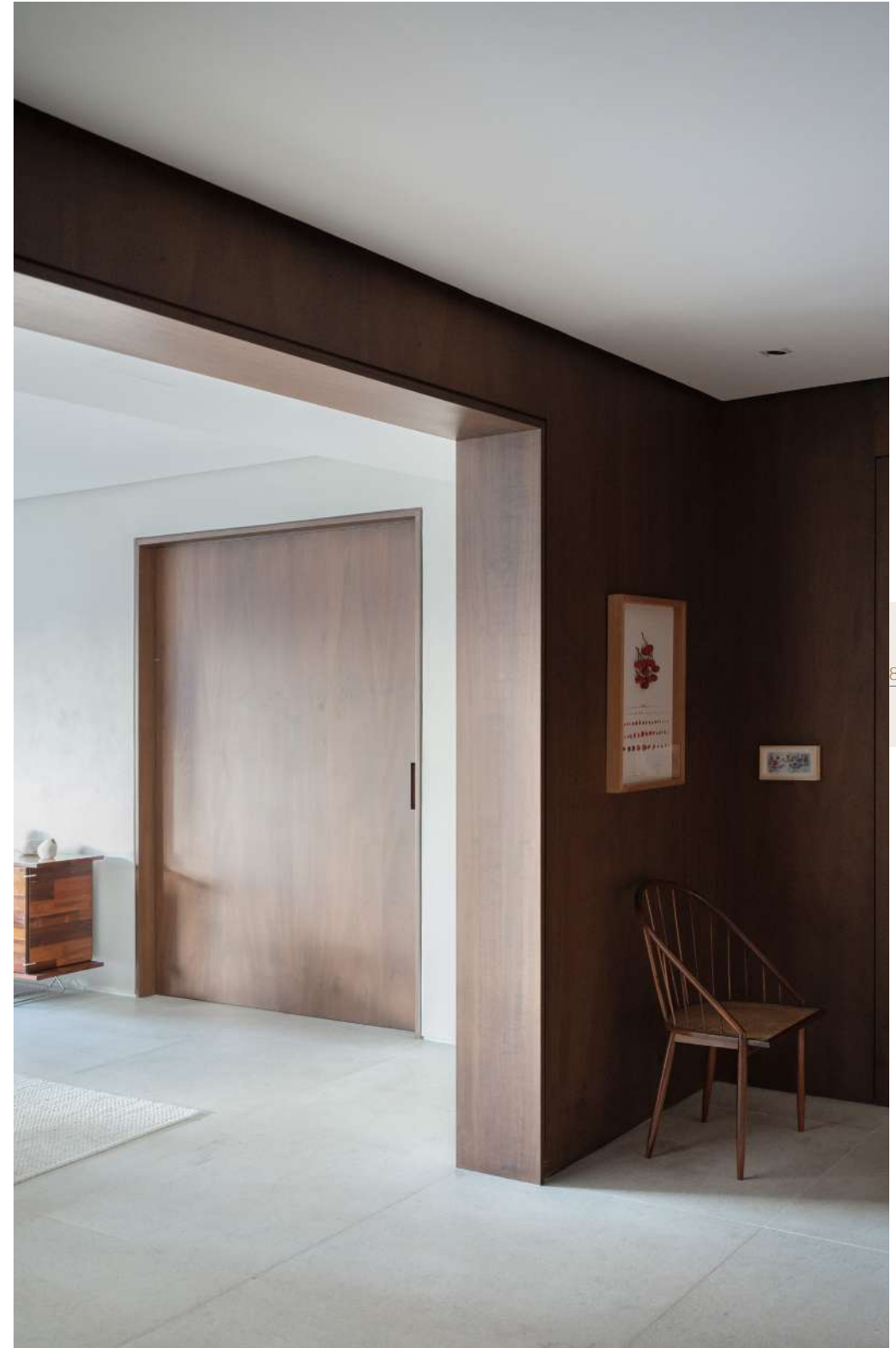
450m²

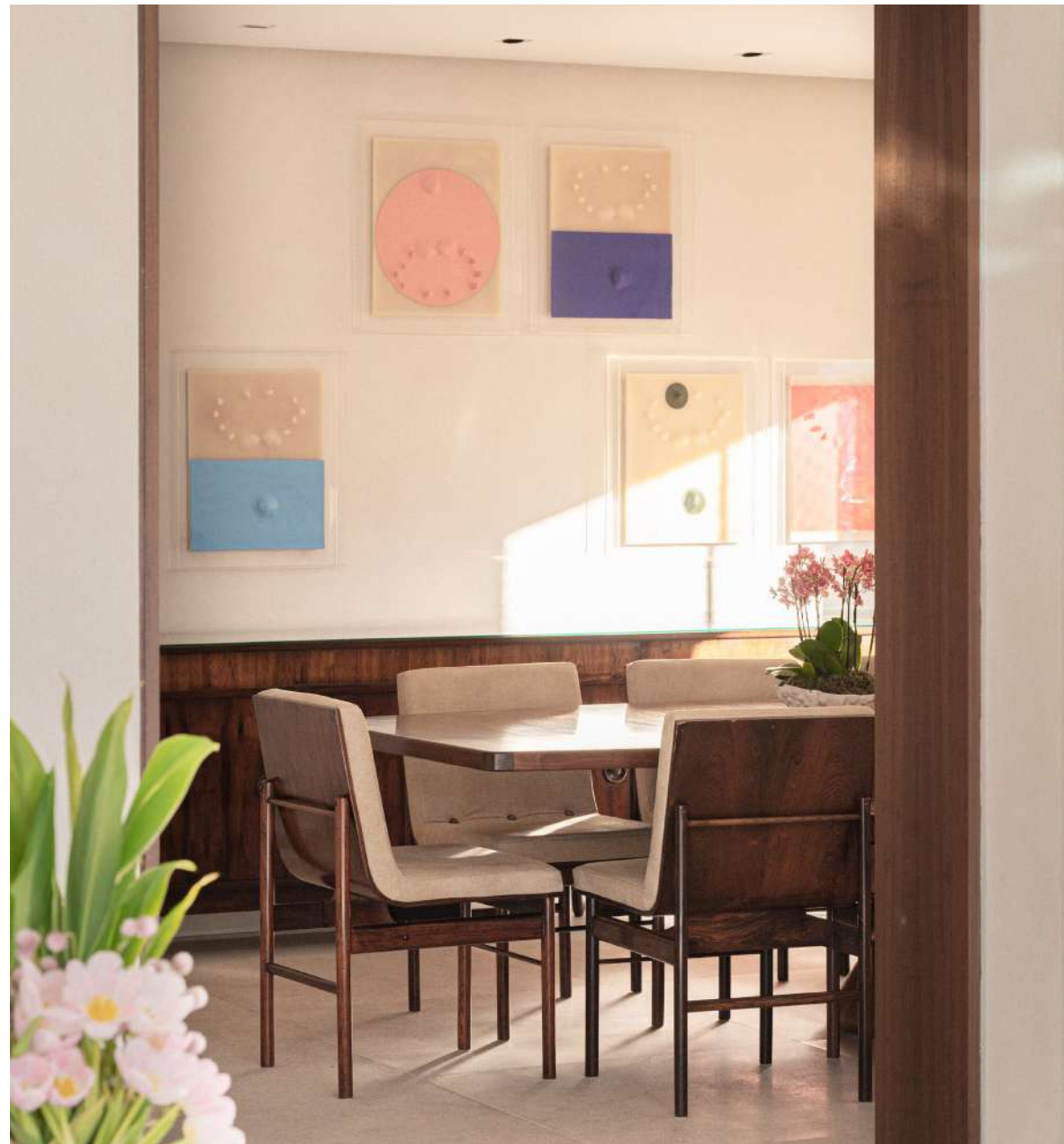
—

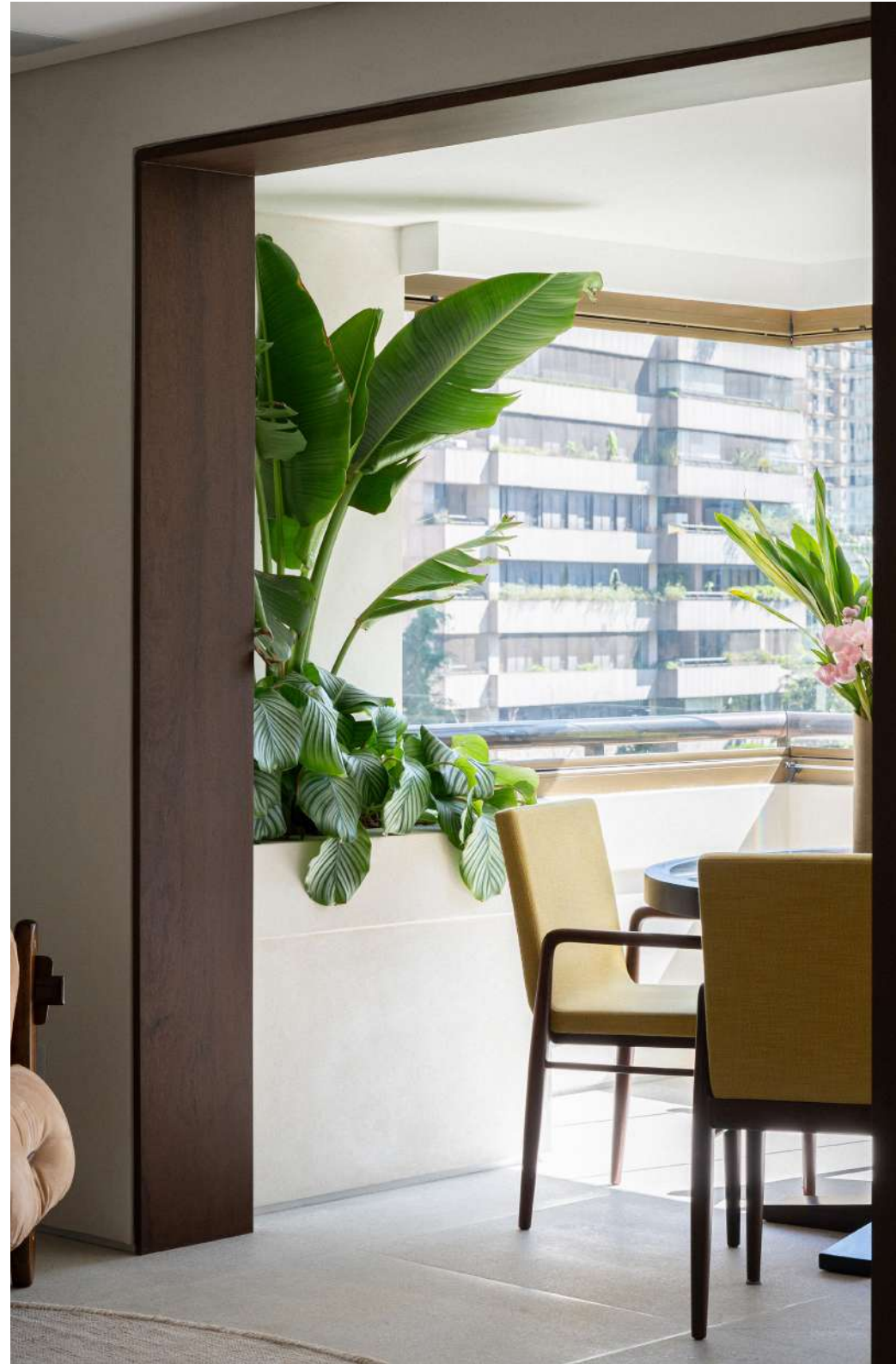
This apartment is the result of a mix of contemporary art and signature design pieces. The distribution of modern and vintage decoration occurs throughout the various environments. The contrast in materiality occurs due to the cold tones of the floor and wall in counterpoint to the darker imbuia wood joinery, creating an air of sobriety and elegance. The balcony has a wide view of one of the most leafy neighborhoods in São Paulo. A house above the treetops.

SÃO PAULO - SP









GF; Apartment

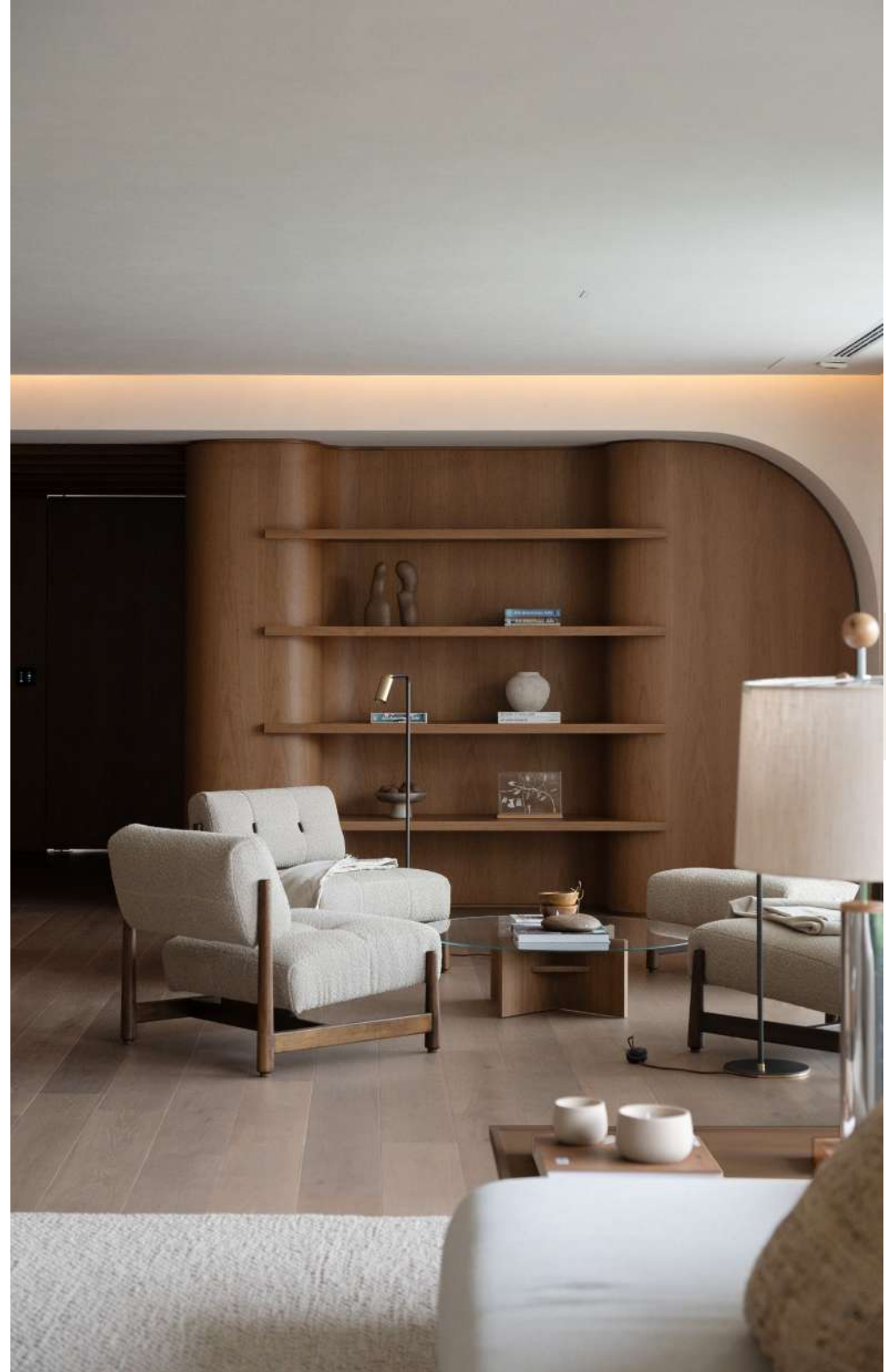
467m²

Simple, well-defined strokes that express a beautiful curation of geometries. So we developed this project.

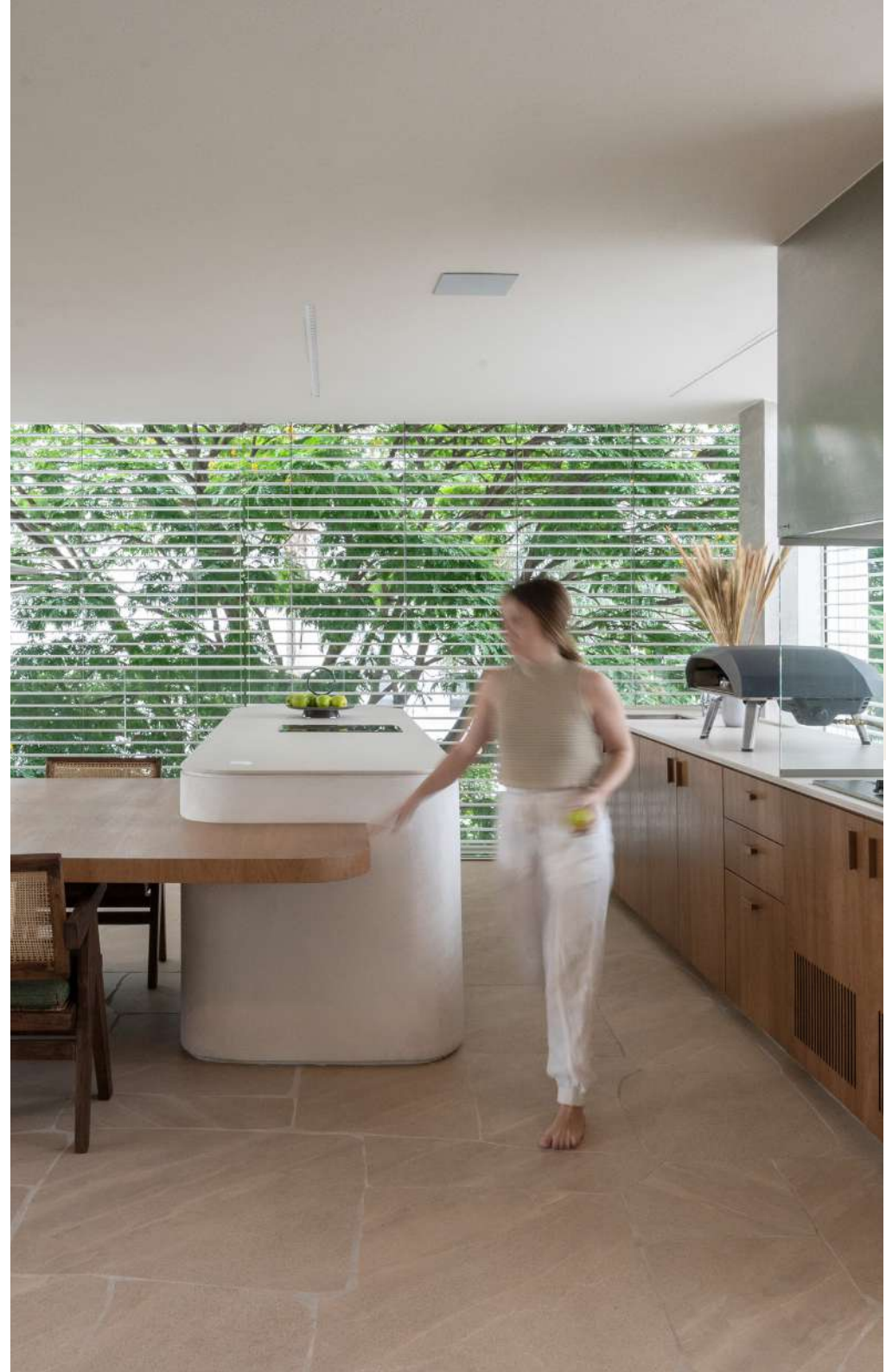
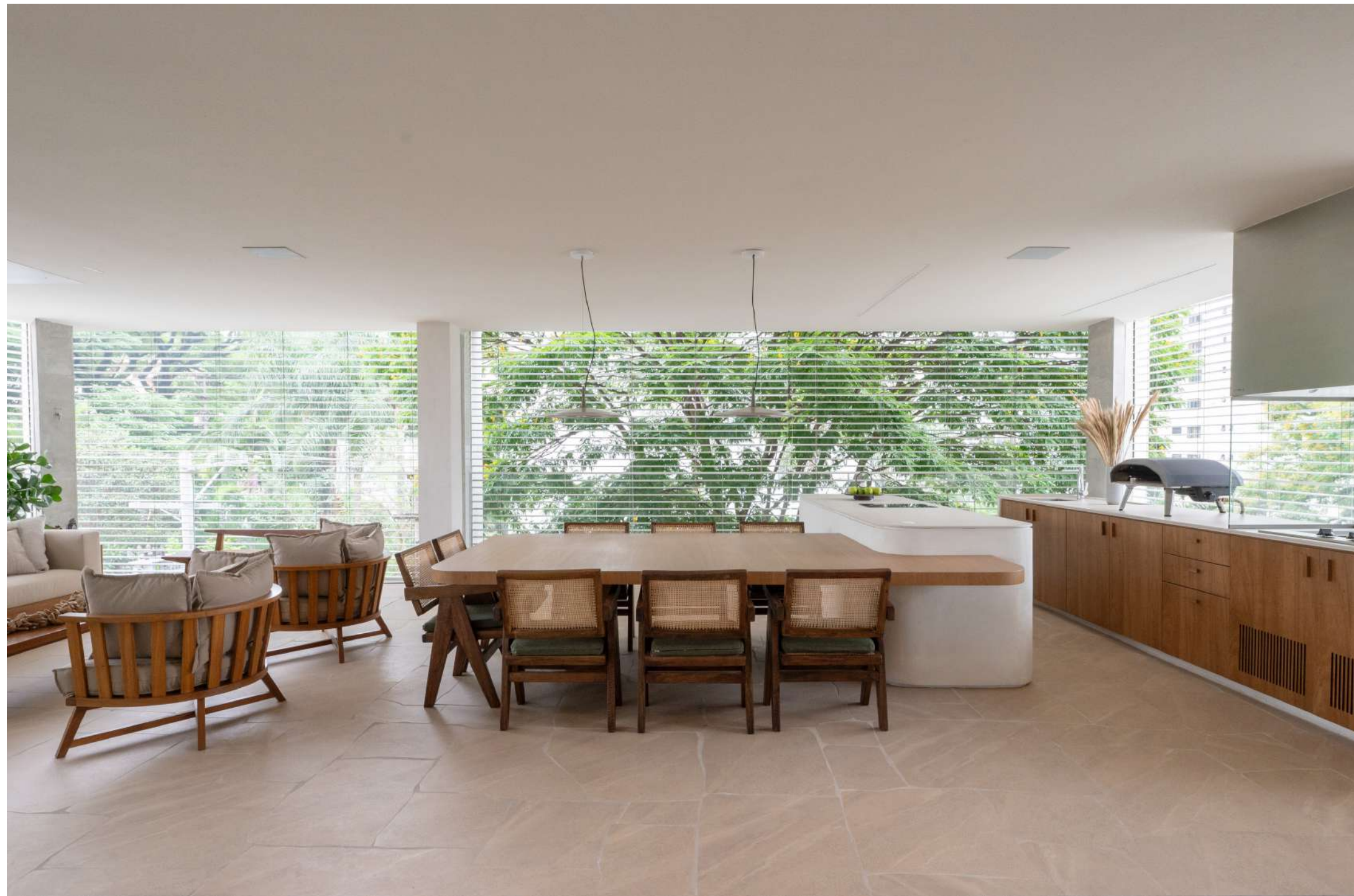
Despite being located in an extremely active and chaotic city at times, this corner would serve as an oasis of peace and comfort.

SÃO PAULO - SP







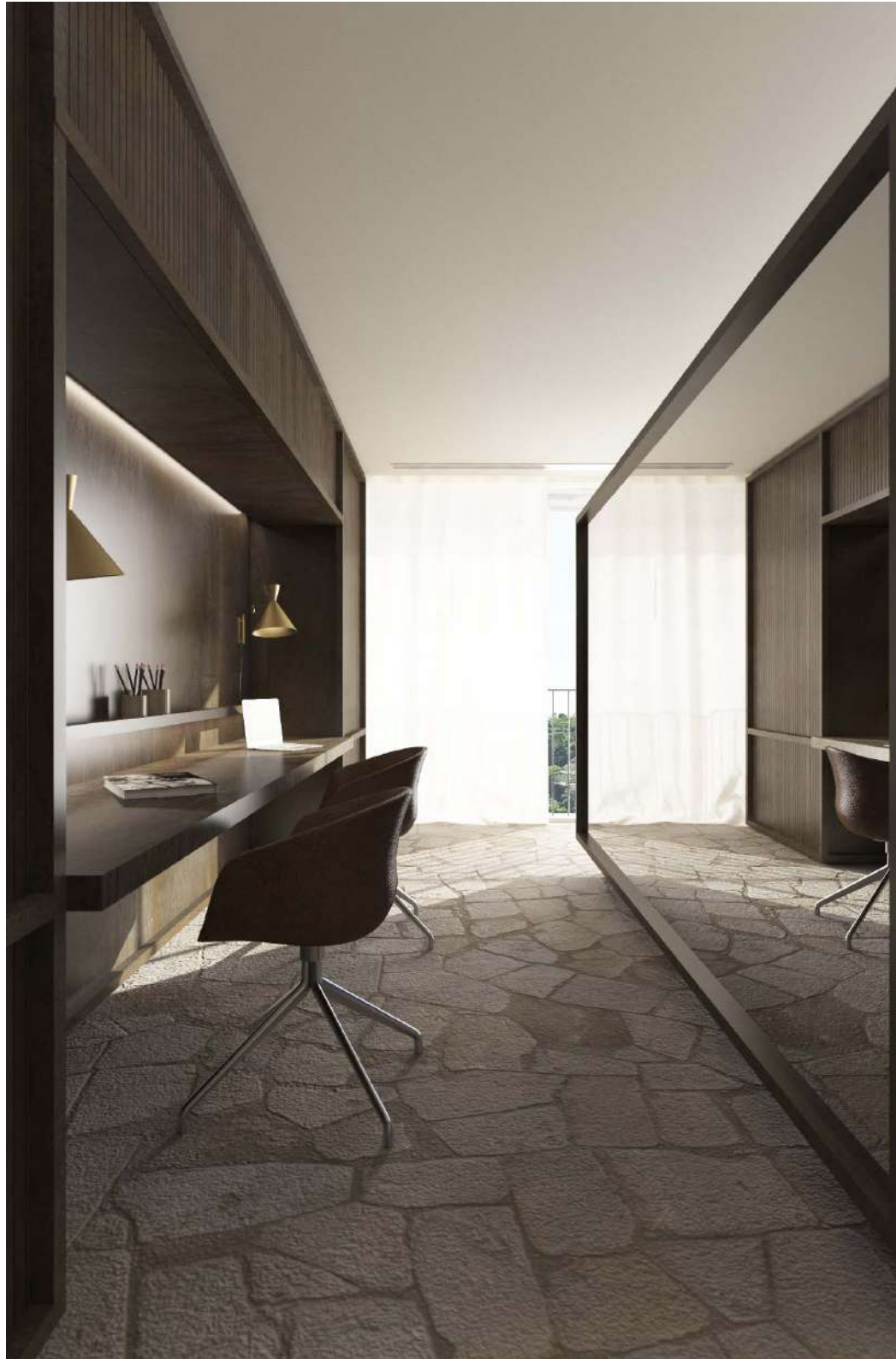


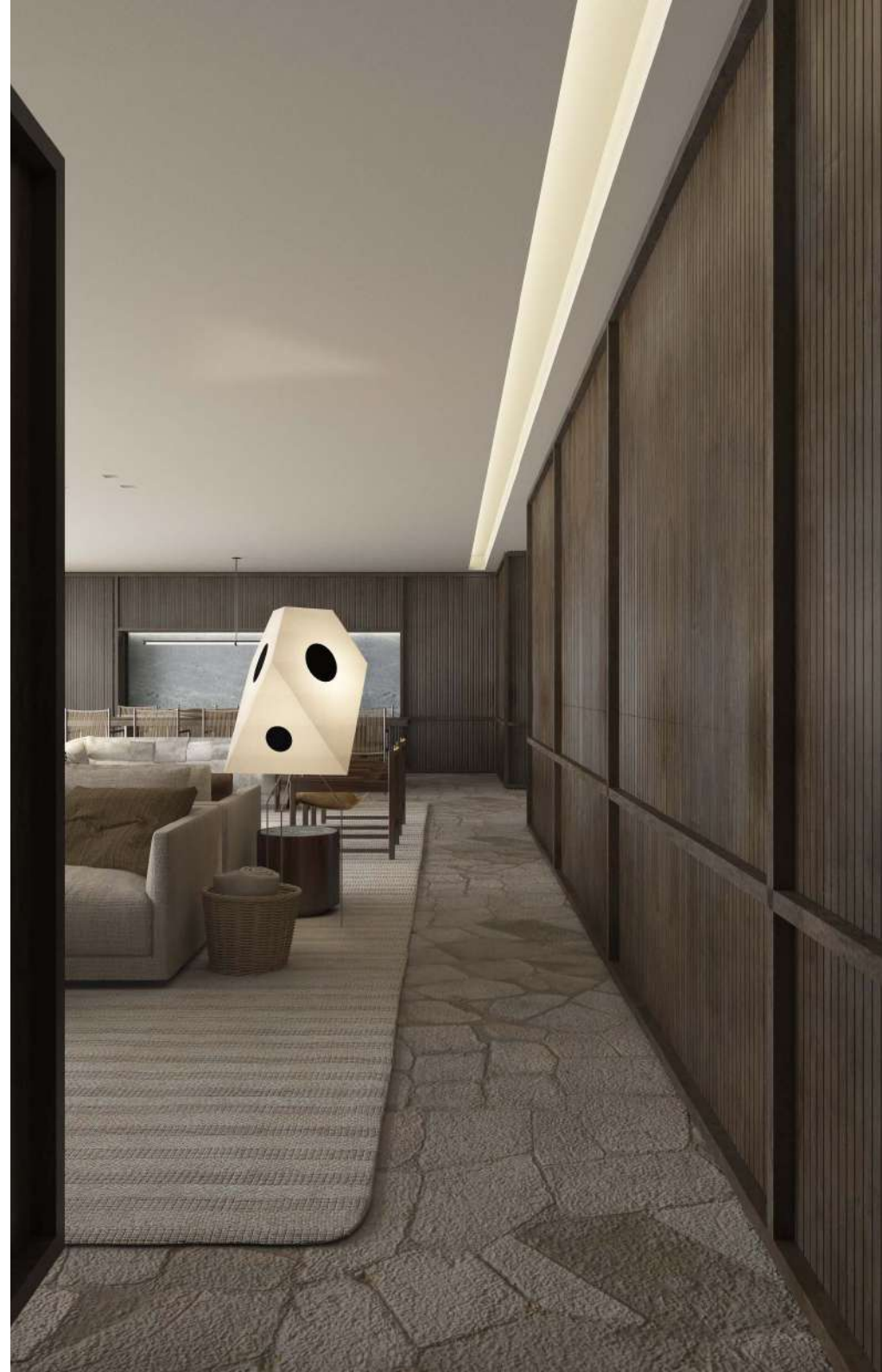
MR. Apartment

230m²

Slatted walnut panels form orthogonality, stone shards clash with its amorphous language. A simple contrast that resulted in a house with Japanese-Brazilian features, so to speak. This apartment has a view of both the forest and the São Paulo skyline. Its very straight plan design allowed us to distribute different uses throughout the living room. Dining, living, home theater and home office with privileged views.

SÃO PAULO - SP





CJ. Apartment

500m²

Located at the height of the tree canopy, between the pillars of the facade a void is created that results in a sequence of vivid paintings, bringing nature from the outside in. A real privilege for those who live in the metropolitan region. What stands out in this project is a curvilinear monolith developed in masonry, whose function is to divide the living room and home theater.

SÃO PAULO - SP





RM. Apartment

85m²

Apartment with a homogeneous palette of colors, where tone on tone conveys elegance and a slight touch of tropicalism.

A refuge in the middle of the city, hiding between the buildings. The richness of the most varied textures creates continuity and transition between each of the spaces.

SÃO PAULO - SP







JB. Apartment

340m²

In the middle of the garden neighborhood, this apartment with earthy and homogeneous tones is defined by the refinement of the material choices. Glass and natural fabric divisions integrate or segregate dining, just as curtains separate the living room from the balcony.

SÃO PAULO - SP



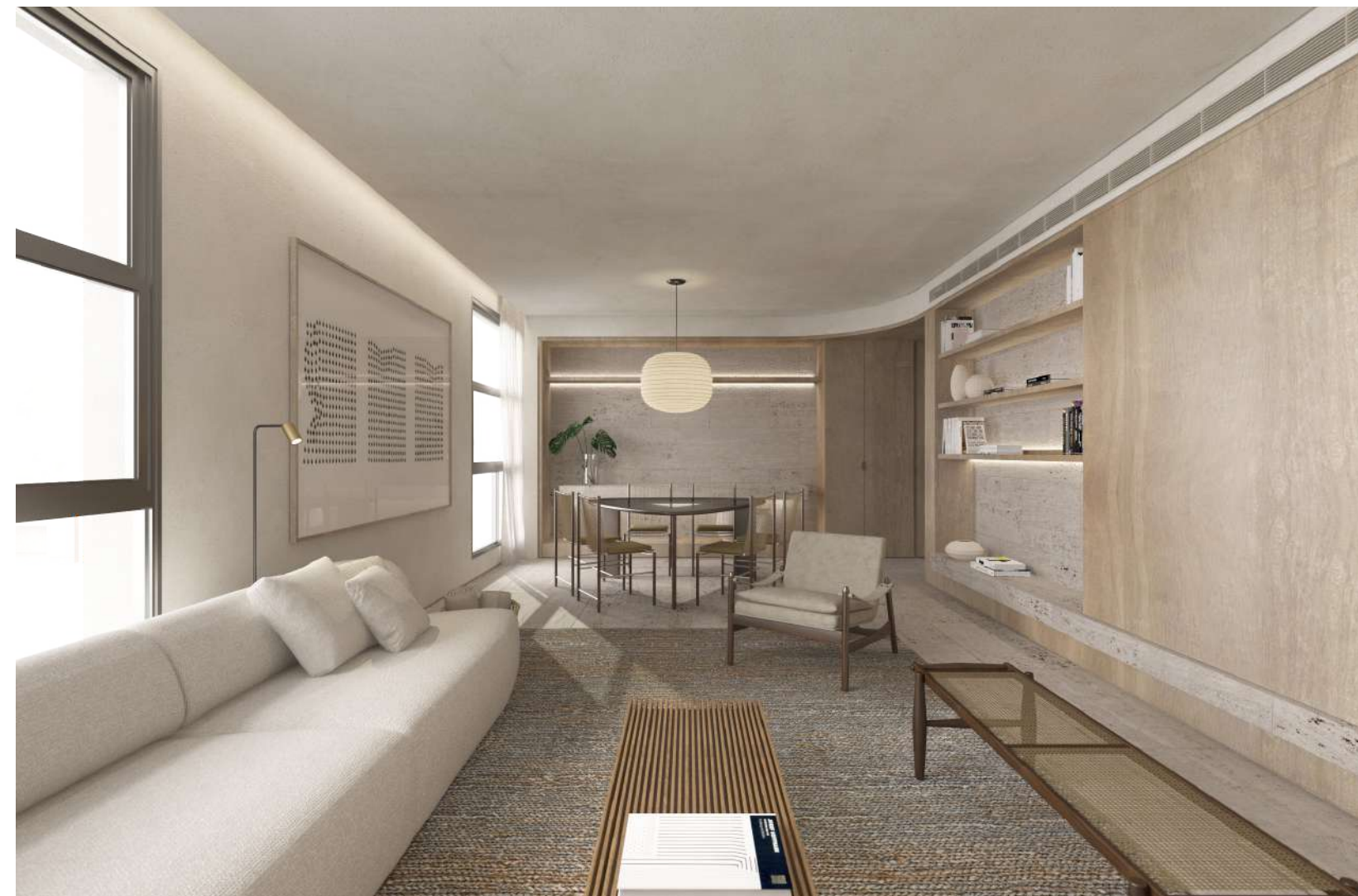


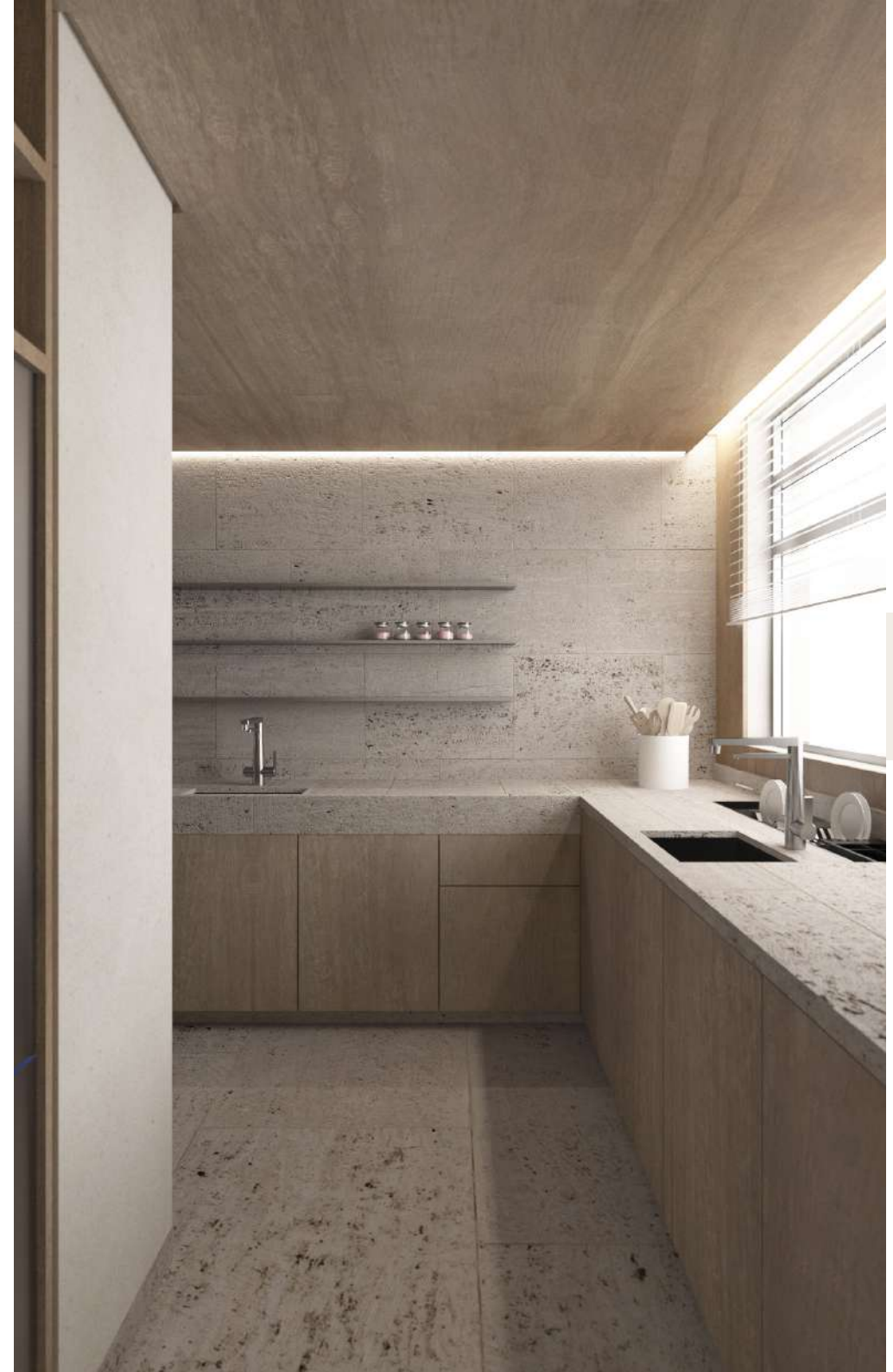
COPACABANA. Apartment

210m²

Facing one of the most famous postcards in the world, this apartment borders Ipanema Beach in Rio de Janeiro. Few curvilinear lines mark the recesses of the wooden volumes.

IPANEMA - RJ





GJ. Apartment

230m²

The contrast between the lightness of the curves and the use of bold materials brings the necessary balance to this project with a young and elegant aesthetic.

The integration between the social area environments is achieved through two curved sofas that are complemented by light and timeless furniture.

SÃO PAULO - SP





LUCAS TAKAOKA

2023